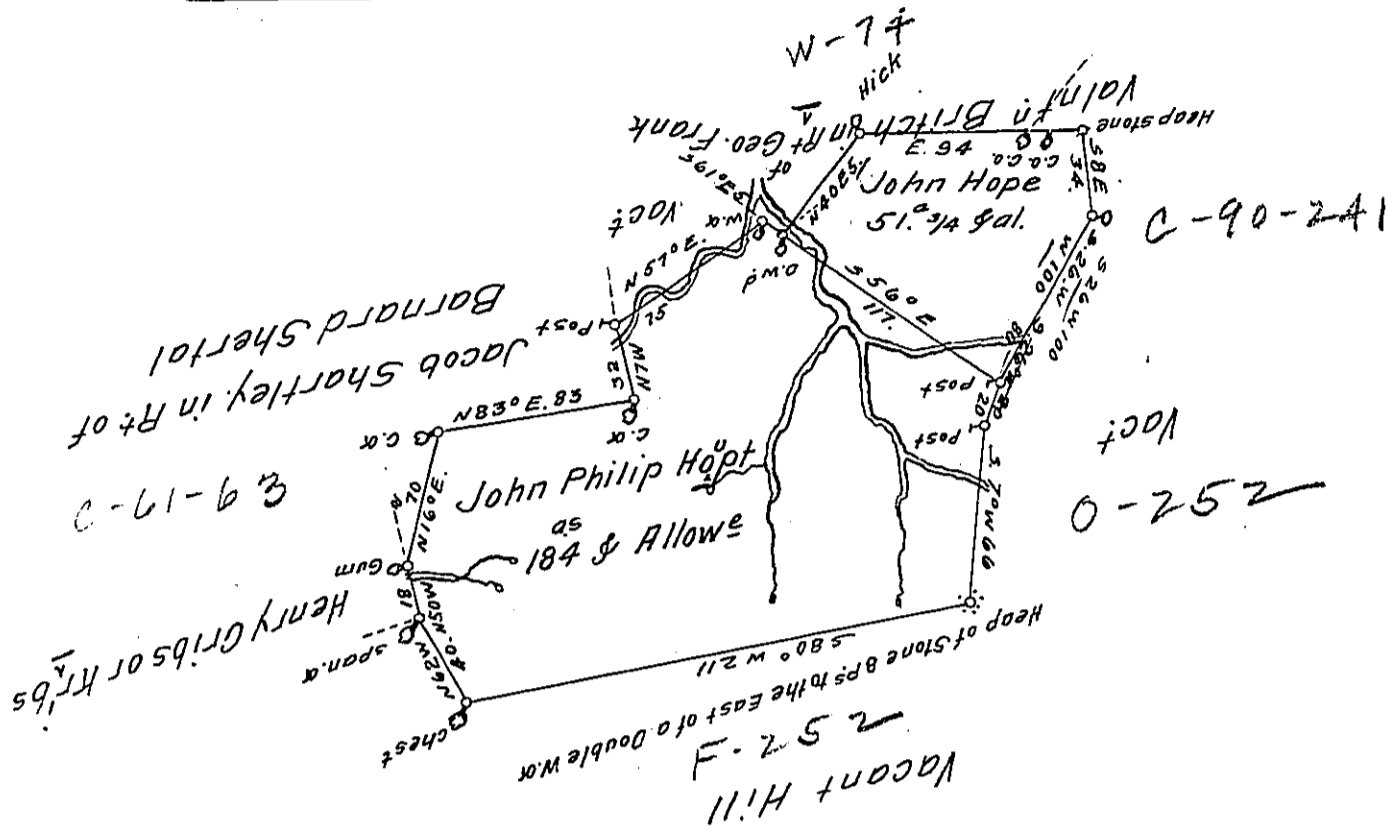


J. P. H. 184
J. H. 5 1/4
235.74 acres



A Draught of a tract of land Called Hope Valley Situate on the waters- Swoba Creek Joining Land of Henry Kribs & others in Mahanoy Township Northumberland County Containing one Hundred & Eighty four Acres & Allow^e of Six & Cent for Roads &c Surveyed for John Philip Hopt the 16th Day of April 1788 in Pursuance of a warrant Dated the 5th Day of Sep^r 1785.

To John Lukens Esq^r }
Surv^r Gen! } by W^m Gray D.S.

IN TESTIMONY that the above is a copy of the original remaining on file in the Department of Internal Affairs of Pennsylvania, made conformably to an Act of Assembly approved the 16th day of February, 1833, I have hereunto set my Hand and caused the Seal of said Department to be affixed at Harrisburg, this fifth day of April 1911.

Henry Hauck

Secretary of Internal Affairs.